

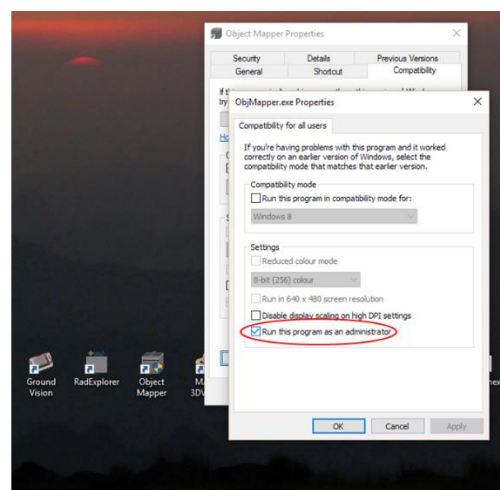
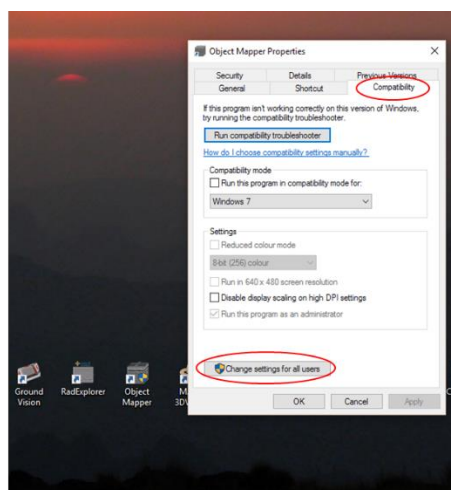
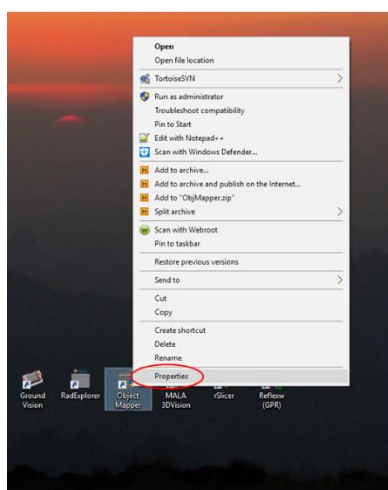
Thank you for downloading ABEM Terrameter LS Toolbox, a comprehensive software companion for the Terrameter LS and LS 2 instruments.

## Installation

- If a version of ABEM Terrameter LS Toolbox is already installed, please remove this first.  
**NOTE:** this will not remove any previously downloaded data from your PC
- Run the file “*TerrameterToolbox\_Setup\*\*\*\*\*.exe*”
- Follow the on-screen instructions.

## Run as administrator

- if you experience any unusual behaviour in the operation of the software it may be a conflict with the security settings within your version of Windows; these can be resolved by running the software in ‘administrator’ mode:



**NOTE:** although these screen shots show Object Mapper as the example, it will work for any software, just locate the correct icon

## Release notes v2.0.2.0

- Fixed: F(x) and F(z) values incorrect in txt export
- Fixed: header offsets in export to txt
- Fixed: Res2DInv format export of non-IP files
- Fixed: issue with renaming project groups to already used names